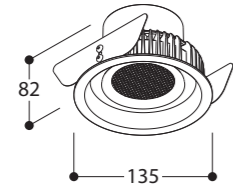


NAME	ORBITAL BASIC LEAF "THROUGH FLOW"		
------	--------------------------------------	--	--

REFERENCE	TAL	ETP	
	650606	AV00206	TEXT. BLACK
	650607	AV00207	TEXT. WHITE

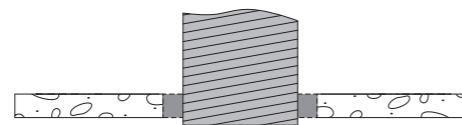
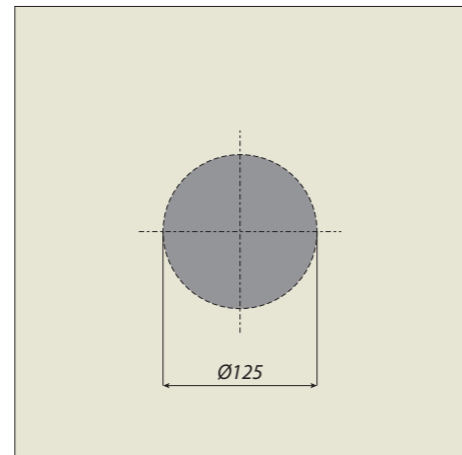
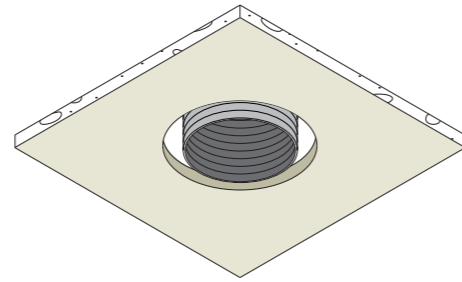


SPECIFICATIONS	Ventilation valve	Supply air/extract air
	Adjustable flow regulator	Not incorporated
	Material	Powdercoated aluminium
	Installation	Leaf springs
	Weight	0,5
Installation depth / cut out	180mm	Ø125mm

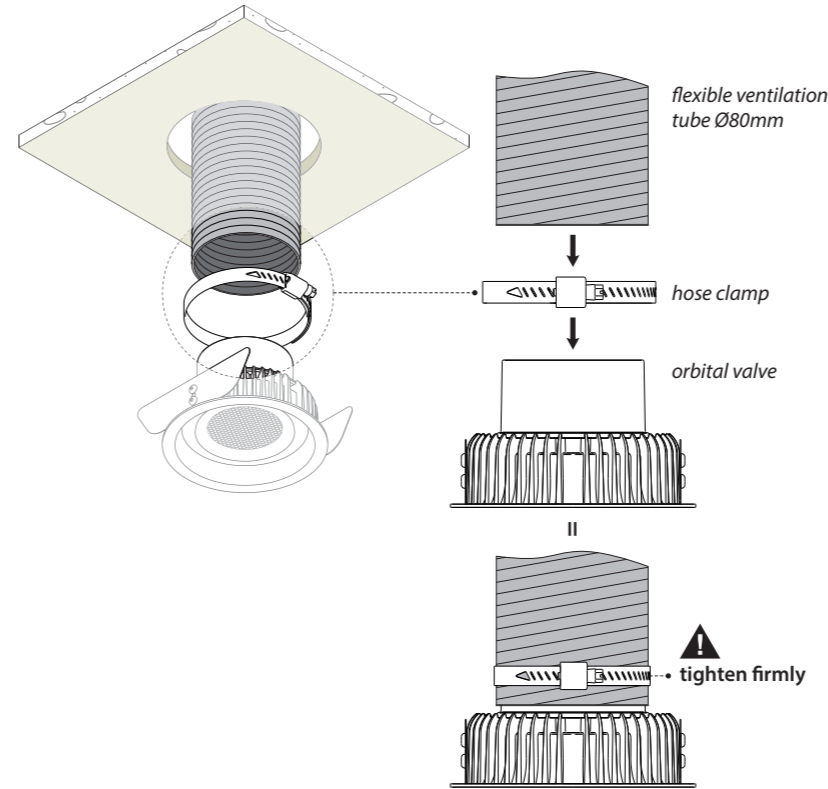
MAXIMUM FLOW RATE	SOUND POWER (dB(A))	FLOW RATE (m³/h)	
		SUPPLY	EXHAUST
	35,0	93,0	94,0
	30,0	77,0	77,0
	25,0	63,0	62,0

INSTALLATION

1 Make hole Ø125mm (127mm)
(min. depth hollow ceilings: 180mm)



2 Connect ventilation tube to the valve
with hose clamp (not included)



3 Deform the leaf springs by hand and
push the valve gently into the hole

